



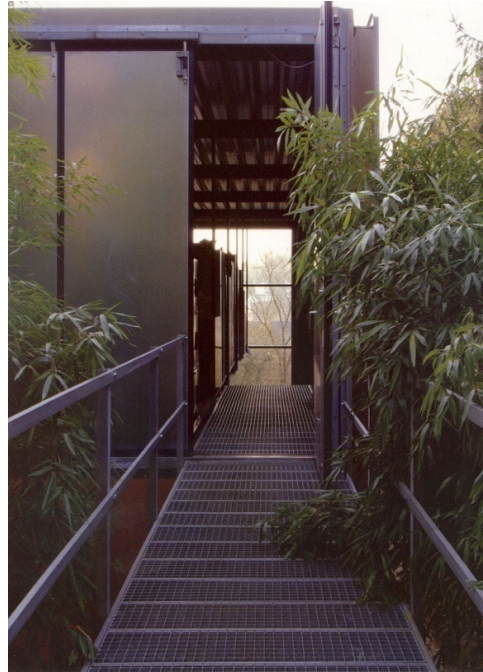
small

eer

house b.v.

family house
completed

project: housing construction is generally based on traditional ideas. the construction of their own house has stimulated the architects to question these basic principles and to think about housing and living in relation to family life. since the habitant thus becomes responsible for the mental process and the conception, he allows a certain level of experiment. the result is a construction wherein form and function, technique and art are complementary in such way that one would loose reason of existence without the presence of the other.



house b.v.



interactive nature: through construction on "pilotis", the house floats over the natural curves of the site. the greenery takes integral part in the concept: large windows and doors ensure optimal contact with nature. the wind, the smell of pines and the chant of the birds penetrate the house without limit. following this philosophy, there are no curtains, but there is life with the rain and the sun, the clouds and the moonlight.





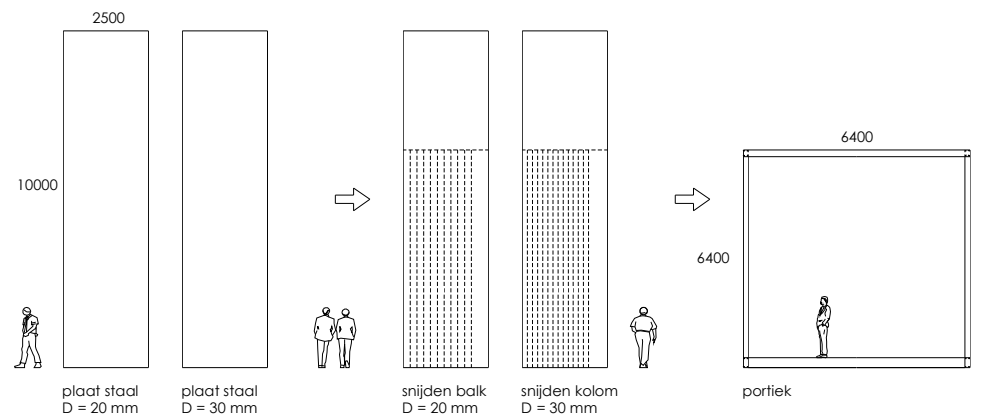
house b.v.



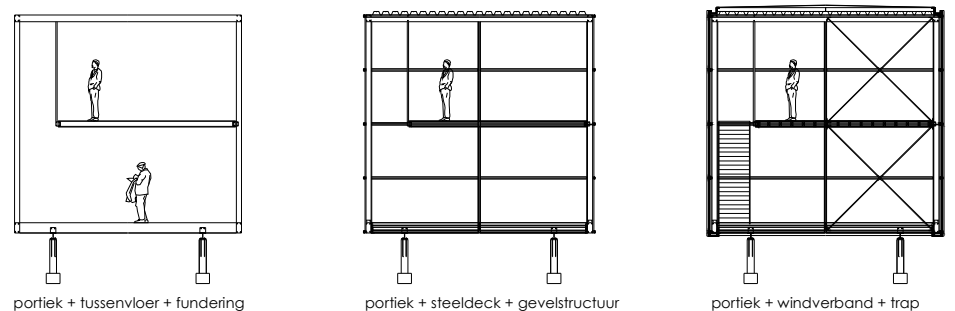
construction: thanks to collaboration with structural engineer laurent ney, the architects conceived a "honest" steel structure that has been assembled on site with bolts only. all structural elements have been cut by "oxycoupage" from two plates of untreated steel, dimensioned 10m x 5m x 2cm and 10m x 5m x 3cm. construction period was three months, inclusive of special techniques and finishes.



concept: structurele elementen gesneden uit plaatstaal door "oxycoupage"



doorsnede: superpositie van structurele elementen

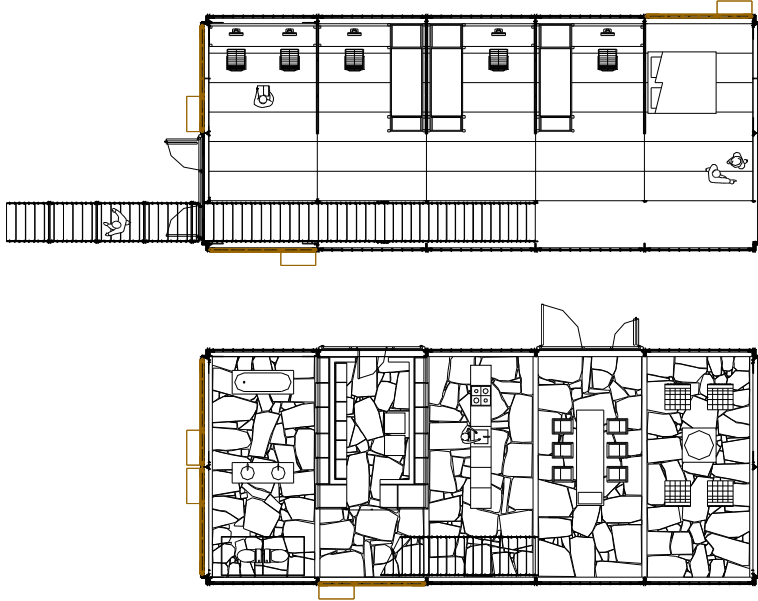


house b.v.

industrial details: to be in compliance with the projects' philosophy, some construction materials had to be found in industrial applications: galvanized steel roof and staircase, folding doors, conduit channels, lockers, sockets and switches. for respect of "the art of building", most construction details have not been hidden: construction techniques and finishing materials are shown in their rough state. the house seems to be "grown" rather than to be "conceived"... conception has returned to its primary and natural form.



house b.v.



second floor

first floor

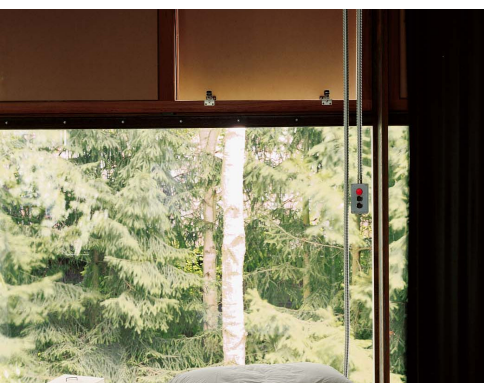
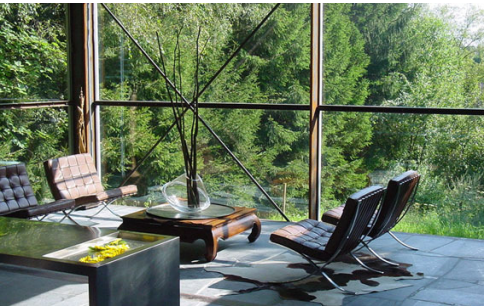
functionality: every single occupant decides how to use the house. the "plan libre" is parallel with a philosophy of life based on flexibility and respect for the other. the plan provides large common spaces to live, work and play, but each individual can retreat to his own private meditation cell. separations between the functions are not materialized, space is acquired according to the needs of the moment. only the technical room acts as a separative element within the "plan libre". the second floor is suspended from the roof, wardrobes along the edge double up as parapet.

flexibility: since the use of the house will evolve at the same pace as the family, much thought has been given to flexibility. techniques are operated by domotica and are centralised in the technical storage. via industrial conduit channels suspended from the ceiling, all necessary ducts are lead trough the house. flexible metal conduits may be added as necessary and descend down to the desired height for sockets and switches.





house b.v.



ERROR: stackunderflow
OFFENDING COMMAND: ~

STACK: